



Blessed to Be a Blessing

Dear Friends and Supporters,

With the Christmas Season behind us and some overly ambitious New Years Resolutions already being broken, many of us are in a clean-up mode. Part of the process usually includes re-reading Christmas cards and setting some of them

aside as keepsakes. One Christmas message that sticks in my mind read: "We wish you a very blessed Christmas and a New Year filled with opportunities to be a blessing to others." That's what we are all about. Why? For We Care.

Mile 8: In the end, it's worth it all



We carried out two Short Term Mission trips in February of 2010, one to Brasil and one to Cameroon. Our church project completion rate, in Cameroon, was great and appreciated. Let's share from Rev. Clifford Fanfon, Pastor of the Berean Baptist Church at Mile 8, Mankon Bamenda, Cameroon (this church was dedicated to the memory of Dr. Walter Kerber) – (the picture shows the first wedding at Mile 8 after the floor was completed): "Greetings in the

Rev. Clifford Fanfon & wife at his ordination

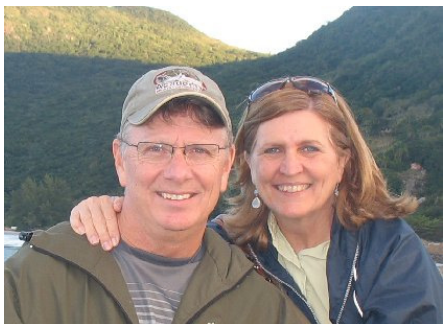


blessed name of our Lord and Savior Jesus Christ. We write to express appreciation for the wonderful assistance you gave us with the building project of our church. Your financial assistance hastened our work by about two years. ... We say thanks a million for this. God alone, who placed us as a burden in your heart, will richly reward you for all you are doing."

Let us introduce you to our newest Directors serving "on the ground"

Our "short term missionaries" who have served with For We Care in Brasil, may recognize Ron and Alana Greenwich;

Ron and Alana Greenwich



and those that have ministered in Cameroon may remember Dennis and Nancy Palmer. Dennis was the NAB Field Director, stationed in Bamenda, before becoming the Program Director, Christian Internal Medicine Specialization Residency.

The requirements of the CRA (Canada Revenue Agency) are more effectively met when we have "our people" serving "on the ground." We appreciate both teams acting as our "eyes and ears"

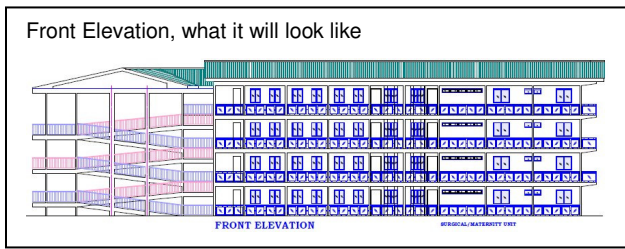
Dr. Dennis and Nancy Palmer



and supporting us in Brasil and Cameroon respectively.

Cameroon

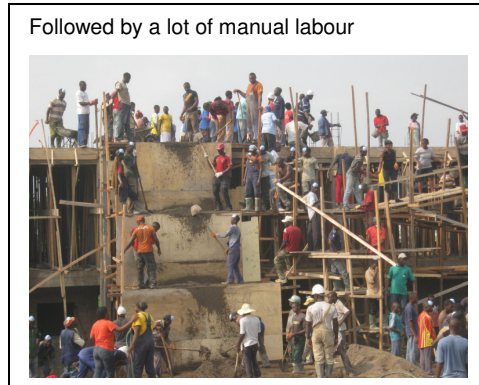
In addition to the Church Project STM team deployed in February, 2010, we were able to provide funding for the "Scholarship & Bursary Fund", the "Pastoral Support Fund", and the "Mutengene Hospital Addition Fund" under the technical direction of Mr. Chiambah Abraham Bujoff. For your additional consideration and support in 2011, we are introducing the "Mbingo Teaching Hospital Residency Fourplex Fund" under the direction of Dr. Dennis Palmer; and the "Comprehensive Vitreoretinal Service Fund", the resources of which will be deployed in the Mutengene and Mbingo Hospitals under the direction of Dr. Emmanuel Tambe.



Mutengene Hospital Addition: Prof. Pius Tih Muffih, Director of Health Services: “We are building this facility addition because there are only 47 beds in the present building, almost half of which are located in unconventional rooms that were not designed as wards. ... Patients are always turned away for lack of space or prematurely discharged to free up beds for emergencies or. In some cases, patients needing isolation must be placed with other patients, risking infection and contamination. ... There are

only three doctors in the Hospital now because of the limited facilities and services.”

With the initial funding help from For We Care, construction has started:



Mbingo Teaching Hospital Dr. Palmer writes: “God is doing amazing things at Mbingo Baptist Hospital. The hospital has a long tradition of serving the people of Cameroon, especially the poor and those with Hanson’s Disease. The hospital has grown rapidly from 80 beds to the present 274 bed capacity since the road past the hospital was paved in the mid-1990s. ... Mbingo has also developed into a teaching hospital. Because the teaching programs have expanded, there is an urgent need for more short and long term housing. In addition, we will need three missionary doctor houses in the next two years, and a smaller duplex to house the short-term volunteer teaching faculty.

A Surgical residency program was begun in 2005 and graduated the first three residents in July, 2010. There are currently five residents in this program. In 2008, we began the Internal Medicine Residency program.

There are currently five residents in this program with two entering their third year of training. In February, 2011, our first missionary Obstetrics/Gynecology physician will arrive with the plan to begin an OB/Gyn residency program in August, 2011.

We also train four interns who work at the hospital for one year immediately after medical school. The discipleship training these young physicians receive in addition to their clinical training will prepare them well to serve in mission hospitals in Cameroon and other countries in Africa. We believe they will be the next generation of medical missionaries.

The hospital infrastructure must be improved to support these programs. The wards have not been upgraded or expanded for many years. They are currently overcrowded with very poor isolation facilities for inpatients with communicable diseases such as tuberculosis.

We lack space for the newly hired Cameroonian ENT physician and the obstetrician-gynecologist to see outpatients. We currently have a three-four month waiting list for elective surgery due to lack of ward space. The electrical supply is of poor quality with frequent daily outages. We cannot operate the expensive medical equipment needed by the hospital until we resolve this problem.”



Comprehensive Vitreoretinal Service for the Mbingo and Mutengene Hospitals: For We Care is pleased to have added this important medical service to its Funding Opportunity Project. Dr. Emmanuel Tambe writes: "I would like to have the Surgery Center at Mutengene, where the utilization rate will be higher. The decision is yet to go through the Board. ... This location is more central and closer to the densely populated towns of Douala, Yaounde and Kumba ... It is closer to the international airport to help serve the subregion and visiting surgeons will have easy access to the center."

Dr. Tambe has detailed the funding need as follows: Retinal cameras for the urban health centers and hospitals X 5: Mbingo Baptist Hospital., Mboppi-Douala, Baptist Hospital Mutengene, Etoug-Ebe-Yaounde, PCC Bafoussam, Banyo Baptist Hospital; Optical coherence tomography X 4; Vitreoretinal surgical unit X 1; Ophthalmic microscope for VR surgery with binocular stereoscopic observer tube and TV viewing system X 1; Biom wide field viewing system X 3; Flat lenses X 3; B-scan; VR surgery sets X 3; VR consumables; as well as train a theater assistant in VR surgery assisting.

Once this project will be completed, the outcome will be proper management of patients: with rhegmatogenous RD; with diabetic Tractional detachment; and other vitreous and retinal diseases. It will also allow us to train ophthalmology residents in the management of diseases of the vitreous and retina."

Pastoral Support and Student Scholarships: According to Campus Crusade for Christ International: "Cameroon faces internal forces that could disable the nation like widespread corruption and deep divisions of language, politics and faith. Prayers have been answered bringing many significant professional, military, police and political leaders to faith in Christ, giving hope for changing this society infamous for corruption. Yet the spiritual poverty of the churches is the greatest tragedy. Nominal Christianity is a bigger problem in Cameroon than in most of Africa. There is a need for godly leaders well trained in the Scriptures." We are pleased to have established the Pastoral Support and Student Scholarship Funds that help develop and support the necessary leadership to address the spiritual poverty of the Cameroonian Society. The required annual support funding is between \$840 and \$1,200 per Pastor and up to \$1,000 per Student.

Brasil



CETE: Pr. Jonas Edison e Dir. Toninho Silva wrote: "One of our big motivators during 2010 was the possibility of working towards the implantation of the CETE Sports project which, with the support of For We Care Outreach Network Society, who donated financial resources, is close to becoming a reality."



CETE is an Orphanage located in San Jose and provides not only for the orphans that they care for but they have also created the first support group for adoption in their community. In addition, many people and families-at-risk were helped with food, clothing, medicine, medical exams, psychological and spiritual assistance. However, this is not the only need in Brasil that For We Care cares about.

CVM: Wilf Kopp visited this Rehab Centre recently and gave us this report: "FWC's undertaking, approximately 10 years ago, to provide funding and labour assistance of construction for the Rehab Facilities is a "Work in Progress". Up to \$750,000 has been spent to build the facility and it would be unfortunate to let something like a simple fire regulation prevent it from operating. In order for CVM to continue operations, major funding is needed to bring the rehabilitation facility up to newly introduced government regulations (for instance, fire safety and laundry facilities). There is also a third dormitory that was started two years ago and needs to be finished. Brazil has seen major economic growth, which is a welcome sign. This however makes it very difficult for non-profit organizations to find "bargains". In short, many products as well as labour have increased in cost dramatically. Therefore, Wilf is willing and available to lead a short term mission team including skilled labour (electricians, etc.) in February, 2012 (possibly Feb 3 – 25) to complete the third Dorm and any other hands-on support. Please consider joining Wilf's team. In addition we need funding for materials, estimated at \$89,000 (fire safety \$23,000; third Dorm completion \$48,000; laundry \$18,000) - plus \$3,500 annually for basic upkeep of property and building maintenance (paint, plumbing, floor repair, roof and electrical).



Canada

We are now able to accept funding for Scholarships to assist with the educational/training needs of people who are disabled in one way or another (e.g. people with Down syndrome, Autism, etc.) and help them integrate into society in a more meaningful and rewarding manner. Because education can transform each of us, let's give a hand-up to all those who would like to improve the quality of their lives. This funding program has been approved by Revenue Canada and the actual training of scholarship recipients will be carried out by the Eckert Psychology & Education Centre of Calgary whose Mission Statement includes: "WE BELIEVE in the value of every individual and their ability to pursue their potential, intellectually, academically, socially, personally and spiritually."

These Then Are Our Funding Opportunities

We would invite each and every one of you to join us and make all of these needs a personal challenge. We are blessed by the generous offer by one church group to match donations to select specific projects (to a certain maximum) – thus doubling the impact of your donation. No donation is too small or too large – every last penny designated to a given project will be allocated to the designated project or, when funding is over-subscribed or can't be carried out due to outside forces, to another project approved by For We Care's Board of Directors. You may also designate your donation to "Where Most Needed" – all funds will be used wisely as we have an extremely small overhead as all administrative services are carried out on a volunteer basis.

Caring Enough to Re-assess Which Needs We Can Focus On

The year as a whole has seen exciting developments in ministry opportunities that we can recommend to our group of supporters for 2011 and well into the future. The trade skills that are now present in Brasil and Cameroon are such that the concept of Short Term Mission teams needs to be reviewed and in some situations restructured. Therefore, some projects do not need the physical support of short-term mission teams; however, all of them are in need of financial support. However, the overall ministry needs are massive (at least a million dollars worth for those named above) and we thank God for the opportunities that He is presenting us with in Cameroon, Brasil and Canada.

Consider becoming a "Short Term Missionary at Home"

We have appreciated the support of many people by setting aside time to participate in one of our short term mission trips to one or more of our "hands-on" projects in Cameroon and Brasil. In addition to their time, they provided the funds to cover the cost of their own travel and a portion of the materials and equipment needed – amounting to several thousand dollars per person. In some cases, these funds were raised from personal savings, through special events, solicitation from family, friends, and businesses that they normally dealt with.

Because of the tremendous financial resources needed for the current projects outlined in this Newsletter, we would like to challenge all of our supporters – young and old, and others that you might introduce to the needs, to become a "Short Term Missionary at Home". What this entails is to take on the challenge to raise a sufficient sum of money for a short term mission trip – say \$6,000 for travel and materials and then contribute all funds raised to For We Care for a designated project and stay home – no sweat labour of love and time required (all funds will be receipted to the people from whom you obtained the support).

If you are interested in becoming a Short Term Missionary at Home, please contact our Administrator Wolfgang Rochow (Telephone: 403-271-4512; Fax: 403-271-9356; email: wolfgang@gestalt.com; or snail mail to our mailing address shown on the front page) and explain to him the project area of interest. Wolfgang will then provide you with all necessary support material to assist you in establishing your own Outreach Network.

On behalf of all Board Members, Ron Klettke, Chairman

Preferred Donation Method – via Cheque (or Money Order): Using a Cheque or Money Order is cost free to us. Make your remittance payable to For We Care Outreach Network Society and mail it to: PO Box 44091 - RPO Southcentre, Calgary, AB, T2J 7C5

Least-Preferred Donation Method – via Credit Card: We have an arrangement with CanadaHelps through whom you can make a donation with your credit card. However, they will withhold 3.9% for handling. This means that for every \$100 that you donate, we receive only \$96.10 towards the designated purpose. If you wish to make use of this option go to our web site (<http://www.forwecare.org/>) and select Support Us / Donate and click on the "Donate Now through CanadaHelps.org" button and follow the instructions.

Tax Receipts: Donations made through CanadaHelps will be tax-receipted by them. Donations made directly to For We Care from individuals are receipted once a year (annual receipt), shortly after the end of the applicable donation calendar year. Donations received from corporate or other legal entities are receipted immediately upon receipt of the donation. Donations received from Charities or Foundations, that are not subject to Income Tax, will be acknowledged through a General Receipt.